



VISIT HERTS

HERTFORDSHIRE'S VISITOR ECONOMY



GO TO PLACES

This infographic summarises the volume and value of tourism and the impact of visitor expenditure on the local economy in 2022. It provides comparative data against previously published data. The results are derived using the Cambridge Economic Model under licence by Destination Research Ltd.

The 2022 economic impact results show a significant recovery in volume of trips and related expenditure, compared to 2021 but still slightly below the levels seen in 2019.

25.0M VISITORS



£2.2BN VALUE

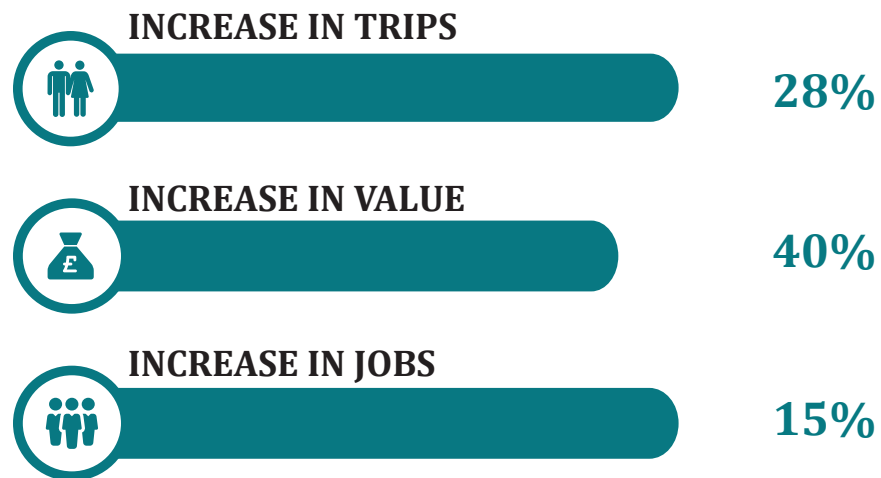


38,936 JOBS

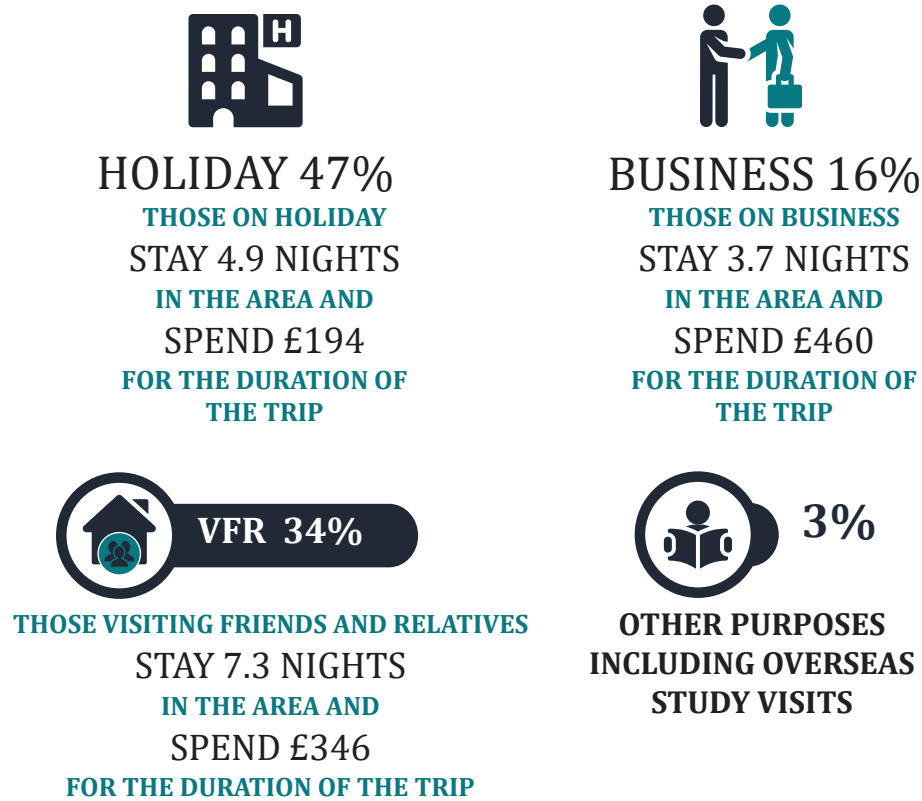


HERTFORDSHIRE'S PERFORMANCE

2021 → 2022

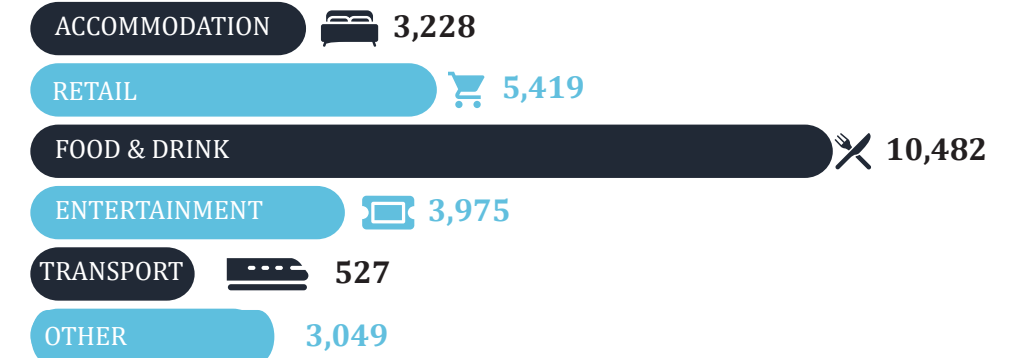


PURPOSE OF TRIP TO HERTFORDSHIRE

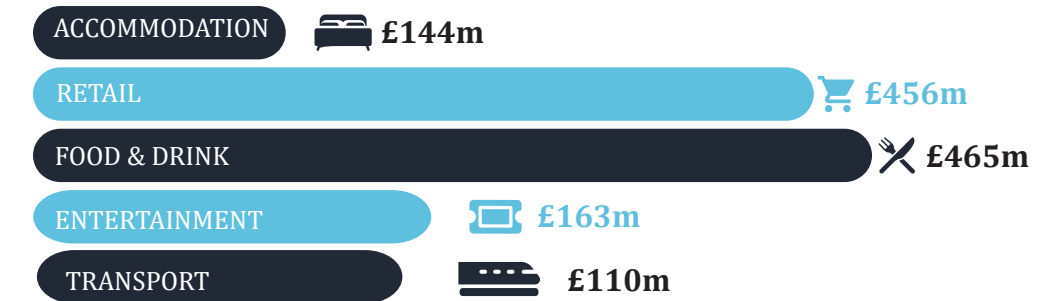


EMPLOYMENT AND VALUE

TOURISM JOBS



DIRECT EXPENDITURE



VISITOR BREAKDOWN



