



VISIT HERTS

HERTFORDSHIRE'S VISITOR ECONOMY



GO TO PLACES

The COVID-19 pandemic has caused global disruption to the visitor economy. The 2021 economic impact results show a significant recovery in volume of trips and related expenditure, compared to 2020 but still below the levels seen in 2019.

In order to reflect the impact of the pandemic, the Cambridge Model results for 2021 are based on a range of administrative sources, local-level data and modelling work.

19.6M VISITORS



£1.6BN VALUE

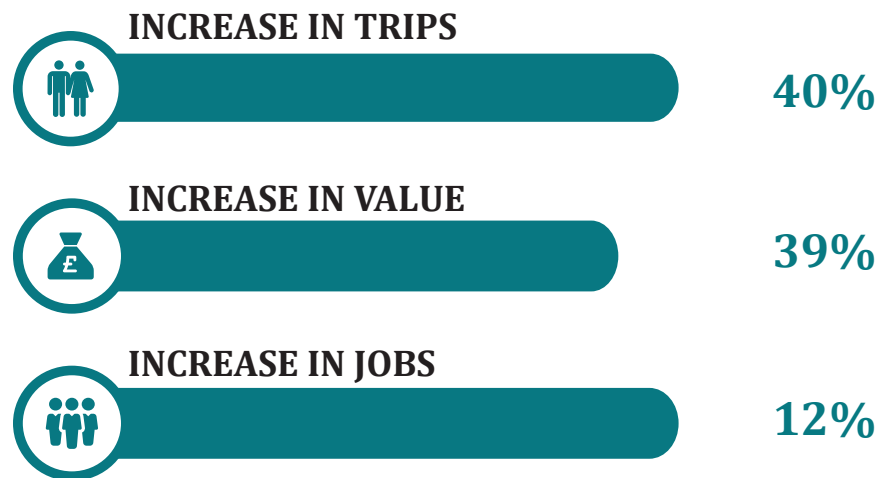


33,889 JOBS

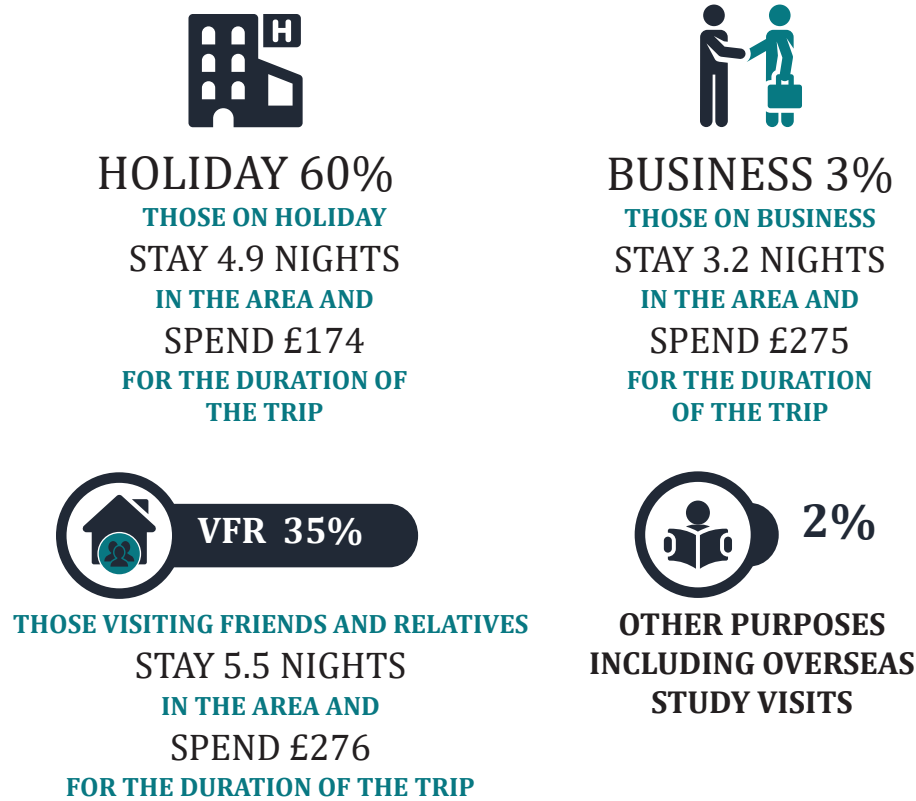


HERTFORDSHIRE'S PERFORMANCE

2020 → 2021

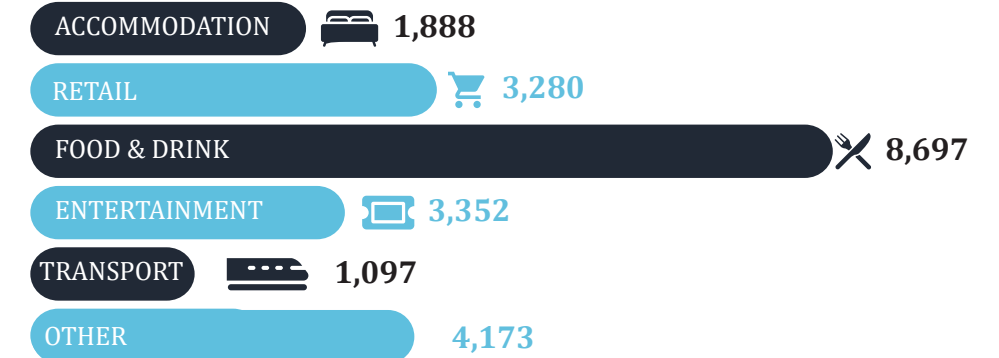


PURPOSE OF TRIP TO HERTFORDSHIRE

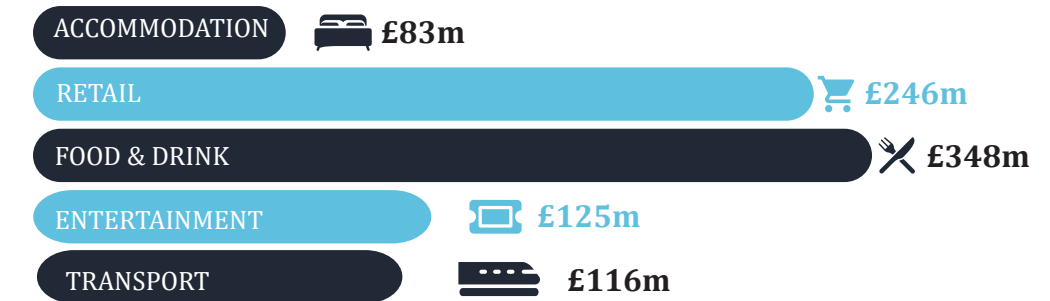


EMPLOYMENT AND VALUE

TOURISM JOBS



DIRECT EXPENDITURE



VISITOR BREAKDOWN





VISIT HERTS

HERTFORDSHIRE'S VISITOR ECONOMY



GO TO PLACES

